
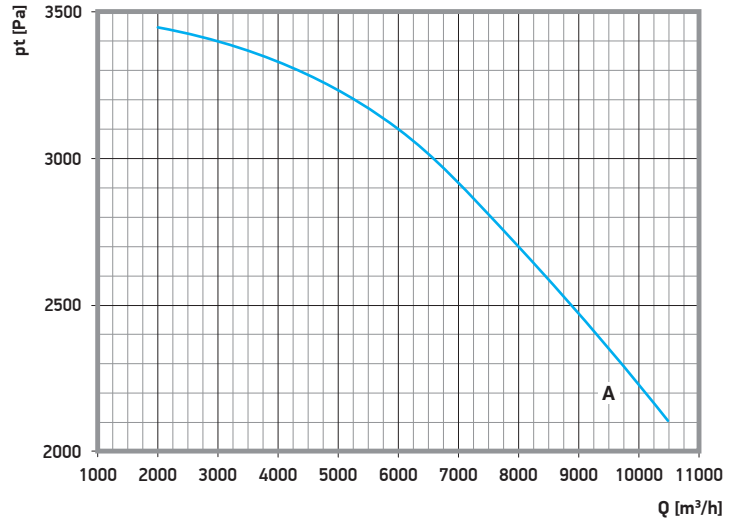


Centrifugal fan FEM 500 series

standard handed RD 0° (other handings available) • protection degree IP 55 • efficiency class IE3



 **3 x 400 V**
50 Hz

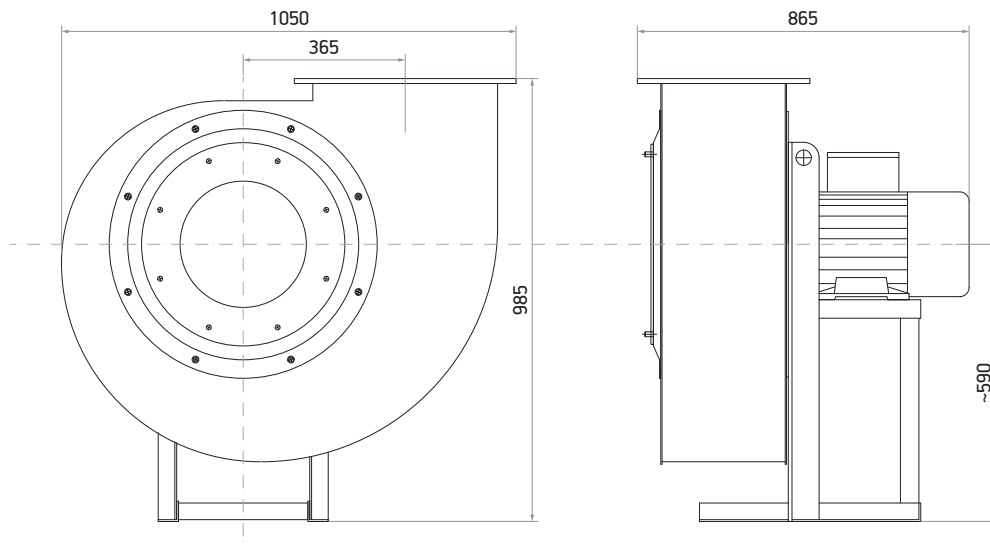


A - FEM 550 / 553

Catalogue number	Type	Air flow	Compression	Fan speed	Motor power	Current	Operating temp.	Weight
59-850-550	FEM 550	1900 - 10500 m³/h	3450 - 2100 Pa	2930 rpm	11,0 kW	20,0 A	standard	220,0 kg
59-850-553	FEM 553	1900 - 10500 m³/h	3450 - 2100 Pa	2930 rpm	11,0 kW	20,0 A	+200°C	220,0 kg

Sound pressure level measured at a distance of 1 m, according to DIN 45635, 45633.

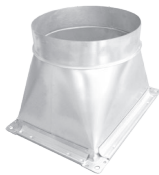
59-850-55x	FEM 55x		63	125	250	500	1000	2000	4000	8000	Hz
			cover	57	61	67	67	68	67	63	59
inlet	68	72	78	78	79	78	74	70			



Fan spigot outlet

- mounting screws included
- made of steel

Cat. no.:	FEM:	Diameter:	Weight:
58-4840-451	500	450 mm	☒
58-4840-502	550	450 mm	☒
58-4840-500	550	500 mm	4,5 kg
58-4840-503	550	400 mm	☒



Fan spigot inlet

- mounting screws included
- made of steel

Cat. no.:	FEM:	Diameter:	Weight:
58-4830-451	500	450 mm	☒
58-4830-503	550	450 mm	☒
58-4830-500	550	500 mm	2,1 kg
58-4830-504	550	400 mm	☒



Vibration absorbers

- to avoid vibration transfer from fan to building structure
- including 4 vibration absorbers
- weight 0,2 kg

Cat. no.:	Dimensions:	Thread:
59-4864-017	50 x 30 mm	M10



Fan bracket kit

Cat. no.:	Length:	Weight:
80-4138-060	600 mm	11,0 kg
80-4138-080	800 mm	13,6 kg
80-4138-100	1000 mm	15,6 kg
80-4138-120	1200 mm	☒
80-4138-150	1500 mm	29,5 kg
80-4138-180	1800 mm	☒
80-4138-200	2000 mm	☒



Anti vibration sleeve

- made of neoprene
- length 200 mm
- including 2 hose clips

Cat. no.:	Diameter:	Operating temp.:
59-4863-400 / 401	400 mm	+180°C / +300°C
59-4863-450 / 451	450 mm	+180°C / +300°C
59-4863-500 / 501	500 mm	+180°C / +300°C



Repair switch

- to turn off the fan for maintenance purpose
- voltage 400 V
- current up to 25,0 A
- protection degree IP 65

Cat. no.:	73-031-007
-----------	------------



Fan soft starter control

- connection facility for up to 6 remote switches
- LED power and fault indication
- internal transformer with 24V secondary for control circuits
- dimensions 380 x 600 x 210 mm

Cat. no.:	Power:	Weight:
70-4010-011	up to 11,0 kW	21,5 kg
70-4010-015	up to 15,0 kW	21,5 kg



Fan starter star delta

- connection facility for up to 6 remote switches
- LED power and fault indication
- internal transformer with 24V secondary for control circuits
- dimensions 380 x 600 x 210 mm

Cat. no.:	Power:	Weight:
70-4010-111	up to 11,0 kW	21,5 kg
70-4010-115	up to 15,0 kW	21,5 kg



Acoustic enclosure box

- for changing weather conditions
- made of steel
- sound absorption up to 12 dB(A)
- weight 189 kg

Cat. no.:	FEM:	Diameter:
57-4841-550	550	500 mm



Acoustic enclosure box

- for working indoors
- made of steel
- sound absorption up to 12 dB(A)
- weight 189 kg

Cat. no.:	FEM:	Diameter:
57-4840-550	550	500 mm

