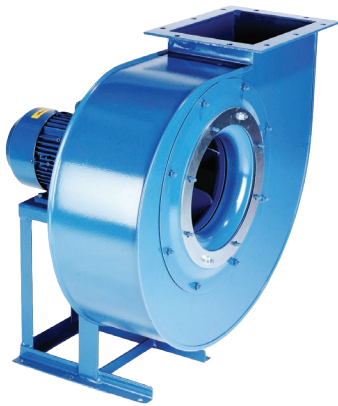

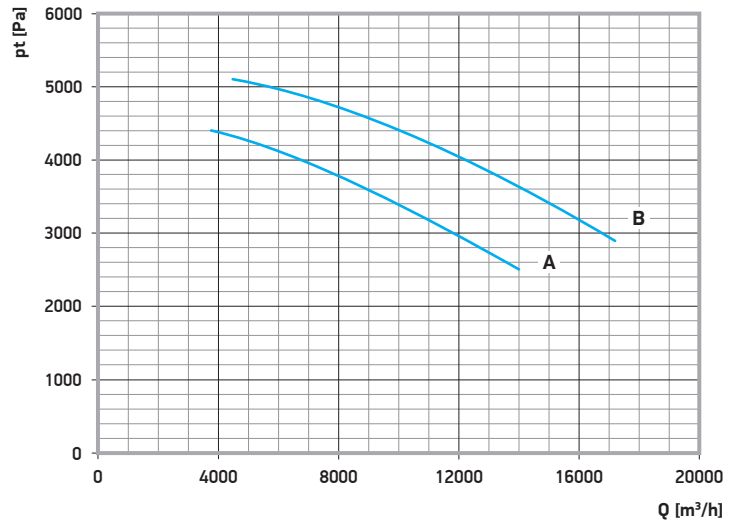


# Centrifugal fan FEM 600 series

standard handed RD 0° (other handings available) • protection degree IP 55 • efficiency class IE3



 3 x 400 V  
50 Hz



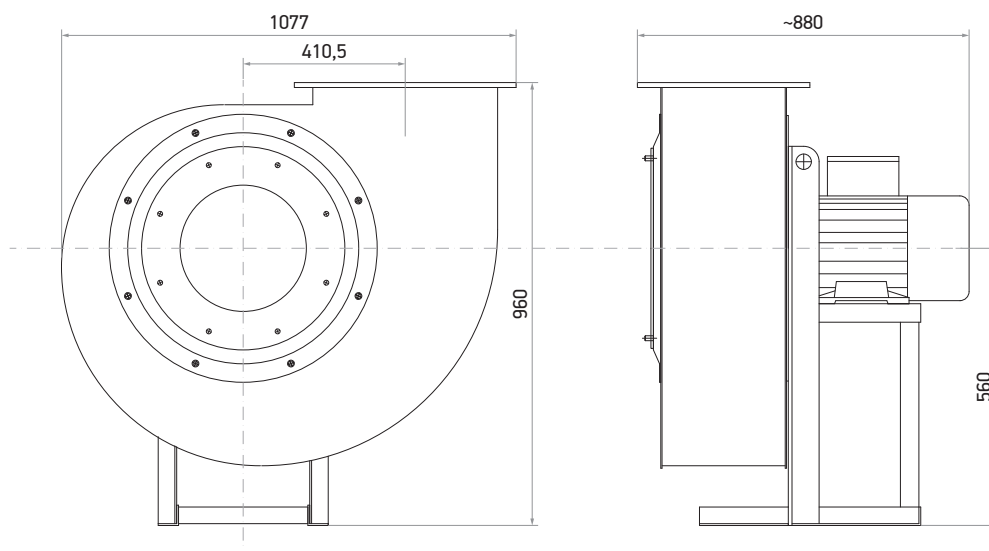
A - FEM 600 / 601

B - FEM 650 / 652

Catalogue number	Type	Air flow	Compression	Fan speed	Motor power	Current	Operating temp.	Weight
59-850-600	FEM 600	3800 - 14000 m³/h	4400 - 2500 Pa	2900 rpm	15,0 kW	27,0 A	standard	270,0 kg
59-850-601	FEM 601	3800 - 14000 m³/h	4400 - 2500 Pa	2900 rpm	15,0 kW	27,0 A	+200°C	270,0 kg
59-850-650	FEM 650	4400 - 17400 m³/h	5100 - 2900 Pa	2900 rpm	18,5 kW	32,4 A	standard	270,0 kg
59-850-652	FEM 652	4400 - 17400 m³/h	5100 - 2900 Pa	2900 rpm	18,5 kW	32,4 A	+200°C	270,0 kg

Sound pressure level measured at a distance of 1 m, according to DIN 45635, 45633.

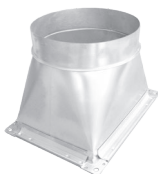
59-850-65x	FEM 65x		63	125	250	500	1000	2000	4000	8000	Hz
			cover	61	65	71	71	72	71	67	63
inlet	72	76	82	82	83	82	78	74			



## Fan spigot outlet

- mounting screws included
- made of steel

Cat. no.:	FEM:	Diameter:	Weight:
58-4840-600	600, 650	560 mm	5,4 kg
58-4840-601	600	450 mm	☒
58-4840-602	600	500 mm	6,0 kg
58-4840-650	650	560 mm	☒



## Fan spigot inlet

- mounting screws included

Cat. no.:	FEM:	Diameter:	Weight:
58-4830-600	600	560 mm	2,0 kg
58-4830-601	600	450 mm	☒
58-4830-602	600	500 mm	2,4 kg
58-4830-650	650	560 mm	☒
58-4830-651	650	500 mm	☒



## Vibration absorbers

- to avoid vibration transfer from fan to building structure
- including 4 vibration absorbers
- weight 0,2 kg

Cat. no.:	Dimensions:	Thread:
59-4864-017	50 x 30 mm	M10



## Fan bracket kit

Cat. no.:	Length:	Weight:
80-4138-060	600 mm	11,0 kg
80-4138-080	800 mm	13,6 kg
80-4138-100	1000 mm	15,6 kg
80-4138-120	1200 mm	☒
80-4138-150	1500 mm	29,5 kg
80-4138-180	1800 mm	☒
80-4138-200	2000 mm	☒



## Anti vibration sleeve

- made of neoprene
- length 200 mm
- including 2 hose clips

Cat. no.:	Diameter:	Operating temp.:
59-4863-450 / 451	450 mm	+180°C / +300°C
59-4863-500 / 501	500 mm	+180°C / +300°C
59-4863-560 / 561	560 mm	+180°C / +300°C



## Fan soft starter control

- connection facility for up to 6 remote switches
- LED power and fault indication
- internal transformer with 24V secondary for control circuits
- dimensions 380 x 600 x 210 mm

Cat. no.:	Power:	Weight:
70-4010-015	up to 15,0 kW	21,5 kg



## Fan starter star delta

- connection facility for up to 6 remote switches
- LED power and fault indication
- internal transformer with 24V secondary for control circuits
- dimensions 380 x 600 x 210 mm

Cat. no.:	Power:	Weight:
70-4010-115	up to 11,0 kW	21,5 kg

