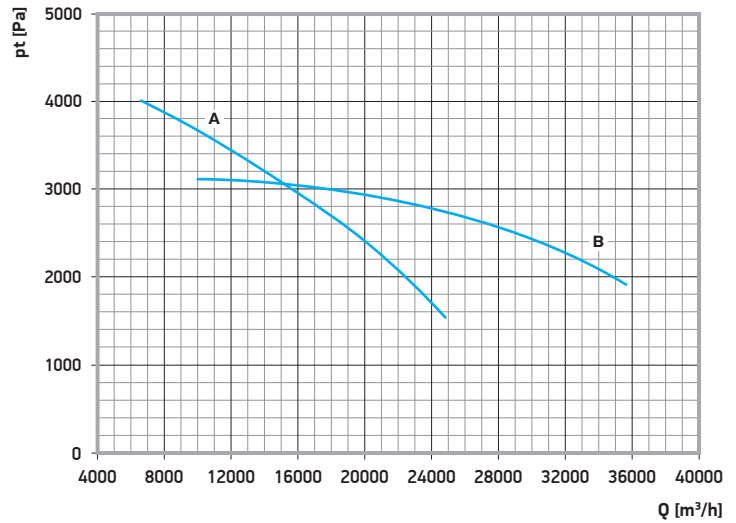
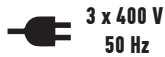
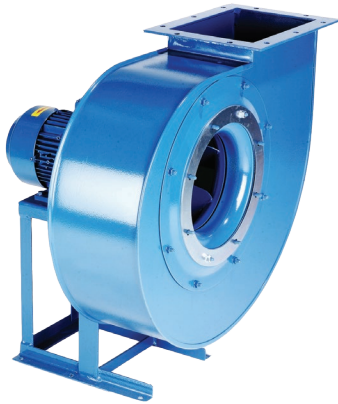


# Centrifugal fan FEM 700 series

standard handed RD 0° (other handings available) • protection degree IP 55 • efficiency class IE3



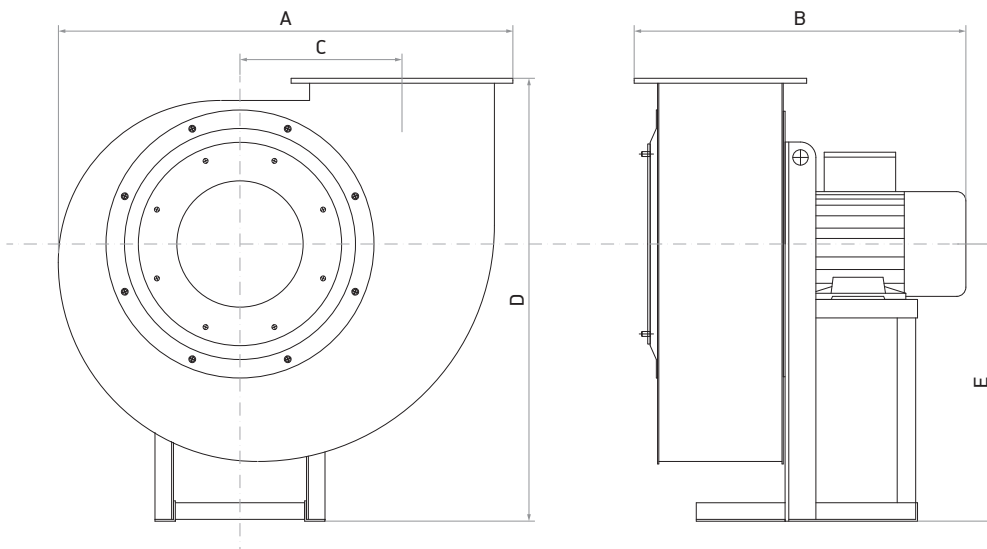
A - FEM 700

B - FEM 750

Catalogue number	Type	Air flow	Compression	Fan speed	Motor power	Current	Operating temp.	Weight
59-850-700	FEM 700	6500 - 24900 m³/h	4000 - 1500 Pa	1470 rpm	22,0 kW	40,6 A	+300°C	430,0 kg
59-850-750	FEM 750	9500 - 35600 m³/h	3100 - 1900 Pa	1470 rpm	22,0 kW	40,2 A	standard	610,0 kg
59-850-753	FEM 750	9500 - 35600 m³/h	3100 - 1900 Pa	1470 rpm	22,0 kW	40,2 A	+300°C	610,0 kg

Sound pressure level measured at a distance of 1 m, according to DIN 45635, 45633.

Catalogue number	Type		Sound pressure level [dB]							
			63	125	250	500	1000	2000	4000	8000
59-850-700	FEM 700	cover	62	66	72	72	73	72	68	64
		inlet	74	78	84	84	85	84	80	76
59-850-75x	FEM 750	cover	60	64	70	70	71	70	66	62
		inlet	71	75	81	81	82	81	77	73

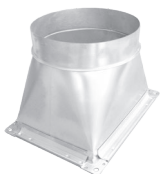


	FEM 700	FEM 750
A	1288	1741
B	~1157	1217
C	458	630
D	1193	1690
E	712	1060

## Fan spigot outlet

- mounting screws included
- made of steel

Cat. no.: 58-4840-750    FEM: 750    Diameter: 630 mm    Weight:



## Fan spigot inlet

- mounting screws included
- made of steel

Cat. no.: 58-4830-750    FEM: 750    Diameter: 630 mm    Weight: 3,0 kg



## Vibration absorbers

- to avoid vibration transfer from fan to building structure
- including 4 vibration absorbers
- weight 0,2 kg

Cat. no.: 59-4864-017    Dimensions: 50 x 30 mm    Thread: M10



## Fan bracket kit

Cat. no.:	Length:	Weight:
80-4138-060	600 mm	11,0 kg
80-4138-080	800 mm	13,6 kg
80-4138-100	1000 mm	15,6 kg
80-4138-120	1200 mm	<input checked="" type="checkbox"/>
80-4138-150	1500 mm	29,5 kg
80-4138-180	1800 mm	<input checked="" type="checkbox"/>
80-4138-200	2000 mm	<input checked="" type="checkbox"/>



## Anti vibration sleeve

- made of neoprene
- length 200 mm
- including 2 hose clips

Cat. no.: 59-4863-630    Diameter: 630 mm    Weight: 5,0 kg



## Fan soft starter control

- connection facility for up to 6 remote switches
- LED power and fault indication
- internal transformer with 24V secondary for control circuits
- dimensions 380 x 600 x 210 mm

Cat. no.:



## Fan starter star delta

- connection facility for up to 6 remote switches
- LED power and fault indication
- internal transformer with 24V secondary for control circuits
- dimensions 380 x 600 x 210 mm

Cat. no.:



## Acoustic enclosure box

- for working indoors
- made of steel
- sound absorption up to 12 dB(A)

Cat. no.:	FEM:	Diameter:
57-4840-750	750	630 mm
57-4840-753	753	630 mm



## Acoustic enclosure box

- for changing weather conditions
- made of steel
- sound absorption up to 12 dB(A)

Cat. no.:	FEM:	Diameter:
57-4841-750	750	630 mm
57-4841-753	753	630 mm

