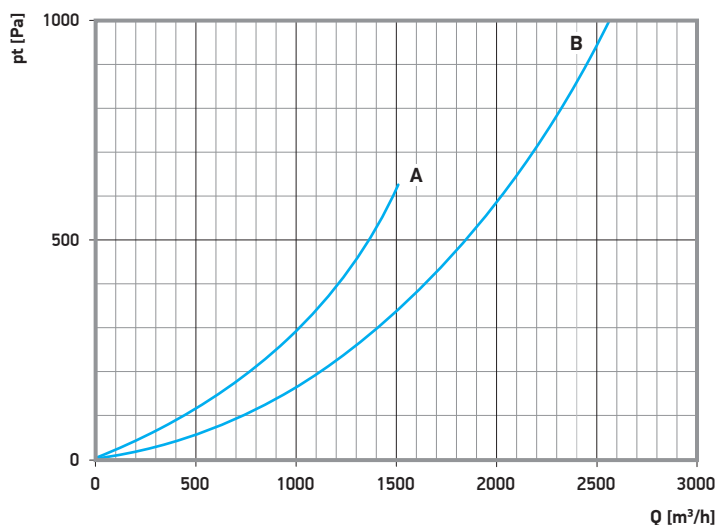


# Extraction trolley for all types of ALU

standard • with butterfly valve type S • with butterfly valve type B

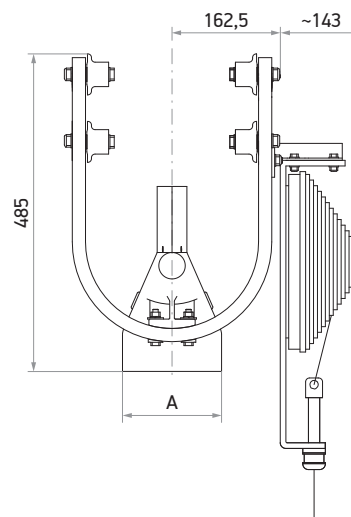
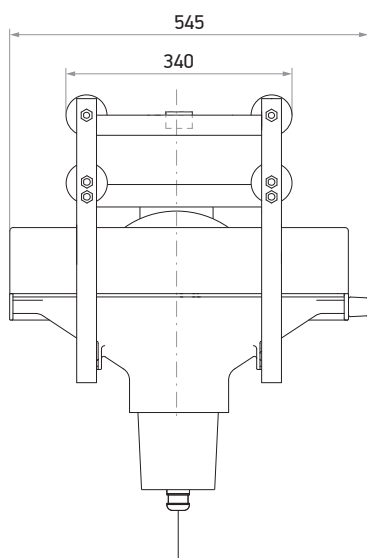


A - extraction trolley DN 100 mm  
B - extraction trolley DN 150 mm

| Standard    | Butterfly valve type S* | Butterfly valve type B** | Connection to hose (A) | Extraction volume | Weight   |         |         |
|-------------|-------------------------|--------------------------|------------------------|-------------------|----------|---------|---------|
|             |                         |                          |                        |                   | Standard | Type S  | Type B  |
| 30-4140-076 | 30-4141-076             | 30-4141-212              | 75 mm                  | 280 m³/h          | 11,3 kg  | 11,7 kg | 11,6 kg |
| 30-4140-100 | 30-4141-100             | 30-4141-213              | 100 mm                 | 500 m³/h          | 11,3 kg  | 11,7 kg | 11,6 kg |
| 30-4140-125 | 30-4141-125             | 30-4141-214              | 125 mm                 | 800 m³/h          | 11,3 kg  | 11,7 kg | 11,6 kg |
| 30-4140-150 | 30-4141-150             | 30-4141-215              | 150 mm                 | 1150 m³/h         | 11,3 kg  | 11,7 kg | 11,6 kg |
| 30-4140-175 | 30-4141-175             | 30-4141-216              | 175 mm                 | 1600 m³/h         | 11,3 kg  | 11,7 kg | 11,6 kg |

\* with butterfly valve controlled by nozzle's wire with ring (not included)

\*\* with butterfly valve controlled by balancer (not included)




## BALANCER HOSE SUSPENSION

**Balancer heavy duty**

- rope length 8,0 m


| Cat. no.:  | Capacity:      | Weight  |
|------------|----------------|---------|
| 39-154-431 | 5,0 ÷ 11,0 kg  | 10,5 kg |
| 39-154-631 | 7,0 ÷ 15,0 kg  | 10,5 kg |
| 39-154-831 | 10,0 ÷ 22,0 kg | 17,5 kg |
| 39-154-833 | 13,5 ÷ 26,0 kg | 16,0 kg |
| 39-154-835 | 15,0 ÷ 30,0 kg | 16,5 kg |



**Balancer support**

- for trolley type ALU 150 / 250, DN 150 / 175 mm
- for balancer type 39-154-xxx
- made of steel
- lenght 150 mm
- weight 1,4 kg

Cat. no.:  
32-4153-112




OR

**Balancer light duty**

- rope length 4,2 m

| Cat. no.:  | Capacity:    | Weight |
|------------|--------------|--------|
| 36-153-151 | 3,5 ÷ 8,0 kg | 5,0 kg |



**Balancer support**

- for trolley type ALU
- for balancer type 36-153-151
- made of steel
- weight 1,2 kg


Cat. no.:  
32-4153-115



**Hose suspension**

- made of plastic
- with slip-resistant foam insert

| Cat. no.:   | Diameter: | Weight |
|-------------|-----------|--------|
| 24-4155-080 | 75 mm     | 0,3 kg |
| 24-4155-100 | 100 mm    | 0,4 kg |
| 24-4155-125 | 125 mm    | 0,4 kg |
| 24-4155-150 | 150 mm    | 0,5 kg |




## STANDARD NOZZLE SUSPENSION

**Wire with ring**

- for mechanical nozzles
- mounting screws included
- weight 0,4 kg


| Cat. no.:   | Lenght: |
|-------------|---------|
| 24-4155-010 | 3000 mm |
| 24-4155-012 | 4000 mm |



**Wire with ring**

- for pneumatic nozzles
- mounting screws included

| Cat. no.:   | Lenght: |
|-------------|---------|
| 24-4155-013 | 3000 mm |
| 24-4155-019 | 4000 mm |




## AUTOMATIC NOZZLE RELEASE FUNCTION

**Automatic release mechanism**

- made of steel
- weight 0,8 kg

Cat. no.:  
32-4145-014



Should be selected separately:

