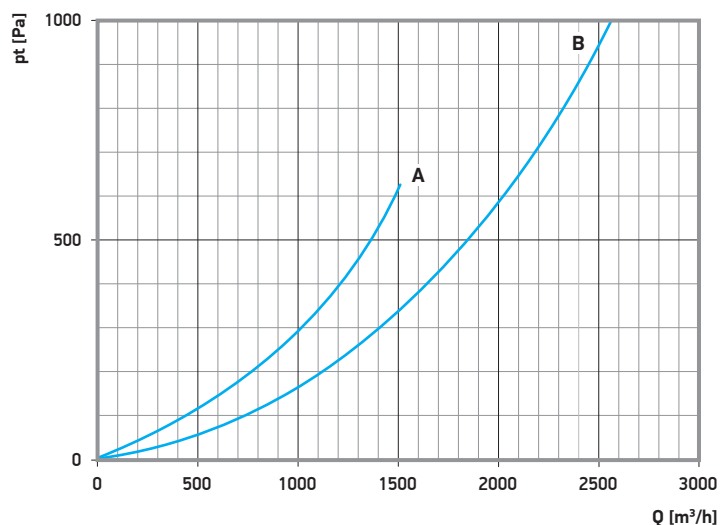
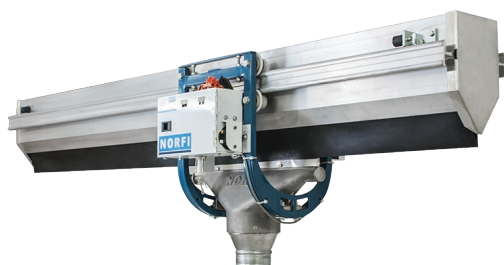


Extraction trolley for all types of ALU

automatic • with electric drive and electric hose hoist

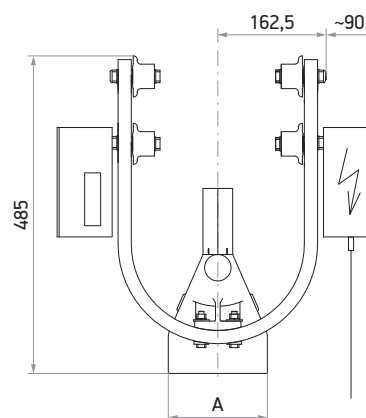
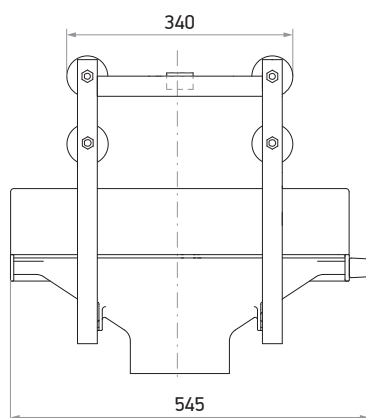


A - extraction trolley type automatic DN 100 mm
B - extraction trolley type automatic DN 150 mm

| Automatic | Electric drive* | Hose hoist** | Connection to hose (A) | Extraction volume | Masa | | |
|-------------|-----------------|--------------|------------------------|-------------------|-----------|--------|--------|
| | | | | | Automatic | Drive | Hoist |
| 30-4142-076 | 35-4250-330 | 36-4250-361 | 75 mm | 280 m³/h | 12,8 kg | 6,8 kg | 4,8 kg |
| 30-4142-100 | 35-4250-330 | 36-4250-361 | 100 mm | 500 m³/h | 12,7 kg | 6,8 kg | 4,8 kg |
| 30-4142-125 | 35-4250-330 | 36-4250-361 | 125 mm | 800 m³/h | 12,8 kg | 6,8 kg | 4,8 kg |
| 30-4142-150 | 35-4250-330 | 36-4250-361 | 150 mm | 1150 m³/h | 12,4 kg | 6,8 kg | 4,8 kg |

* trolley's electric drive should be ordered separately

** hose's electric hoist should be ordered separately



AUTOMATIC NOZZLE RELEASE FUNCTION - INCLUDED

Automatic release mechanism

- made of steel
- weight 0,8 kg

Cat. no.:
32-4145-014



ELECTRIC TROLLEY DRIVE - ORDERED SEPARATELY

Electric trolley drive

- power supply 3 x 400 V, 50 Hz
- weight 6,8 kg

Cat. no.:
35-4250-330



ELECTRIC HOSE HOIST - ORDERED SEPARATELY

Electric hose hoist

- power supply 3 x 400 V, 50 Hz
- weight 6,8 kg

Cat. no.:
35-4250-361



Twin bus bar

Cat. no.:
60-4262-xxx



Twin bus bar

Cat. no.:
60-4262-xxx



Additional parts for sequence controller

- additional function fan run/stop; for direct connection of fan
- motor protection switch up to 4,0 A
- includes motor protection switch

Cat. no.:
05-730-060



Additional parts for sequence controller

- additional function fan run/stop; for direct connection of fan
- motor protection switch up to 4,0 A
- includes motor protection switch

Cat. no.:
05-730-060



Trolley position sensor

Cat. no.:
70-710-034

Vehicle position sensor

Cat. no.:
78-4061-304

Trolley position sensor

Cat. no.:
70-710-034

Vehicle position sensor

Cat. no.:
78-4061-304

Hose suspension

- made of plastic
- with slip-resistant foam insert

| Cat. no.: | Diameter: | Weight |
|-------------|-----------|--------|
| 24-4155-080 | 75 mm | 0,3 kg |
| 24-4155-100 | 100 mm | 0,4 kg |
| 24-4155-125 | 125 mm | 0,4 kg |
| 24-4155-150 | 150 mm | 0,5 kg |



Should be selected separately:

