

**EXHAUST EXTRACTION SYSTEMS**

**Product  
catalogue**



# Extraction rail TECHNORAIL for passenger cars

**NORFI**



with balancer



with hose suspension



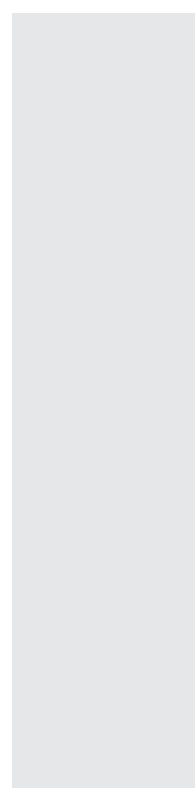
3 x 400 V  
50 Hz



+180°C  
with NR-B hose

GVWR up to 3,5 t / Hose diameter 100 mm / Hose length 5,0 m

Extraction rail length	Catalogue number			
	Trolley with line	Trolley with balancer	2 trolleys with lines	2 trolleys with balancers
6,0 m	TECHNO.06.1	TECHNO.06.1B	TECHNO.06.2	TECHNO.06.2B
8,0 m	TECHNO.08.1	TECHNO.08.1B	TECHNO.08.2	TECHNO.08.2B
10,0 m	TECHNO.10.1	TECHNO.10.1B	TECHNO.10.2	TECHNO.10.2B
12,0 m	TECHNO.12.1	TECHNO.12.1B	TECHNO.12.2	TECHNO.12.2B
14,0 m	TECHNO.14.1	TECHNO.14.1B	TECHNO.14.2	TECHNO.14.2B
16,0 m	TECHNO.16.1	TECHNO.16.1B	TECHNO.16.2	TECHNO.16.2B



# Extraction rail TECHNORAIL for trucks

**NORFI**



with balancer



with hose suspension



3 x 400 V  
50 Hz



+180°C  
with NR-B hose

GVWR up to and above 3,5 t / Hose diameter 150 mm / Hose length 5,0 m

Extraction rail length	Catalogue number			
	Trolley with line	Trolley with balancer	2 trolleys with lines	2 trolleys with balancers
10,0 m	TECHNO.10H.1	TECHNO.10H.1B	TECHNO.10H.2	TECHNO.10H.2B
12,0 m	TECHNO.12H.1	TECHNO.12H.1B	TECHNO.12H.2	TECHNO.12H.2B
14,0 m	TECHNO.14H.1	TECHNO.14H.1B	TECHNO.14H.2	TECHNO.14H.2B
16,0 m	TECHNO.16H.1	TECHNO.16H.1B	TECHNO.16H.2	TECHNO.16H.2B
18,0 m	TECHNO.18H.1	TECHNO.18H.1B	TECHNO.18H.2	TECHNO.18H.2B
20,0 m	TECHNO.20H.1	TECHNO.20H.1B	TECHNO.20H.2	TECHNO.20H.2B



# Exhaust hose reel P5 series driven by electric motor

**NORFI**



3 x 400 V  
50 Hz



+180°C  
with NR-B hose

GVWR up to 3,5 t

Catalogue number	Reel's series	Exhaust hose NR-B		Nozzle type	Fan		
		Diameter	Length		Type	Power	Current
P5-4603-100	800	100 mm	10,0 m	25-4936-100	N35	0,75 kW	1,9 A
P5-4603-101	800	100 mm	10,0 m	25-4936-100	N34	0,37 kW	1,0 A

GVWR up to above 3,5 t

P5-4611-150	1000	150 mm	10,0 m	25-4934-150	N35	0,75 kW	1,9 A
-------------	------	--------	--------	-------------	-----	---------	-------



# Exhaust hose reel P5 / S5 series spring driven

**NORFI**



P5 series



S5 series



3 x 400 V  
50 Hz



+150°C  
with S hose



+180°C  
with NR-CP/NR-B hose

GVWR up to 3,5 t

Catalogue number	Reel's series	Exhaust hose			Nozzle type	Fan		
		Type	Diameter	Length		Type	Power	Current
P5-4601-100	600	NR-CP	100 mm	7,5 m	25-4936-100	N34	0,37 kW	1,0 A
P5-4601-101	600	NR-B	100 mm	7,5 m	25-4936-100	N34	0,37 kW	1,0 A
P5-4601-105	800	NR-B	100 mm	10,0 m	25-4936-100	N34	0,37 kW	1,0 A
S5-4601-075	600	S	75 mm	6,0 m	25-4932-075	N34	0,37 kW	1,0 A
S5-4601-100	600	S	100 mm	7,5 m	25-4936-100	N34	0,37 kW	1,0 A
S5-4601-105	800	S	100 mm	10,0 m	25-4936-100	N34	0,37 kW	1,0 A

GVWR up to and above 3,5 t

P5-4601-150	800	NR-CP	150 mm	7,5 m	25-4934-150	N35	0,75 kW	1,9 A
P5-4601-154	800	NR-CP	150 mm	10,0 m	25-4934-150	N35	0,75 kW	1,9 A
P5-4601-155	800	NR-CP	150 mm	10,0 m	25-4934-150	N36	1,10 kW	2,5 A
S5-4601-150	800	S	150 mm	7,5 m	25-4932-150	N35	0,75 kW	1,9 A
S5-4601-154	800	S	150 mm	10,0 m	25-4932-150	N35	0,75 kW	1,9 A
S5-4601-156	600	S	150 mm	6,0 m	25-4932-150	N35	0,75 kW	1,9 A



# Single flexible extractor P6 / S6 series with hose suspension / with balancer

**NORFI**



\*with balancer



P6 series



S6 series



3 x 400 V  
50 Hz



+150°C  
with S hose



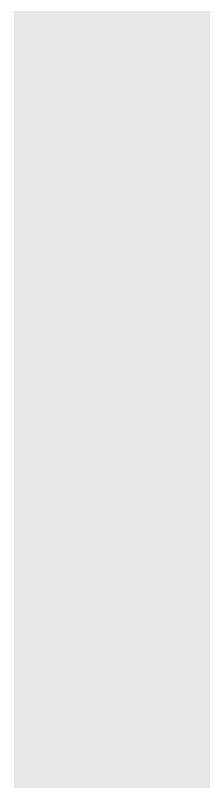
+180°C  
with NR-CP/NR-B hose

GVWR up to 3,5 t

Catalogue number	Exhaust hose			Nozzle type	Fan		
	Type	Diameter	Length		Type	Power	Current
P6-4996-100	NR-CP	100 mm	5,0 m	25-4936-100	N34	0,37 kW	1,0 A
P6-4996-101	NR-CP	100 mm	7,5 m	25-4936-100	N34	0,37 kW	1,0 A
P6-4996-101B*	NR-B	100 mm	7,5 m	25-4936-100	N34	0,37 kW	1,0 A
S6-4996-075	S	75 mm	5,0 m	25-4932-075	N34	0,37 kW	1,0 A
S6-4996-100	S	100 mm	5,0 m	25-4932-100	N34	0,37 kW	1,0 A
S6-4996-101	S	100 mm	7,5 m	25-4932-100	N34	0,37 kW	1,0 A
S6-4996-102	S	100 mm	7,5 m	25-4936-100	N34	0,37 kW	1,0 A

GVWR up to and above 3,5 t

P6-4996-150	NR-CP	150 mm	5,0 m	25-4932-150	N35	0,75 kW	1,9 A
P6-4996-151	NR-CP	150 mm	7,5 m	25-4932-150	N35	0,75 kW	1,9 A
S6-4996-150	S	150 mm	5,0 m	25-4932-150	N35	0,75 kW	1,9 A
S6-4996-151	S	150 mm	7,5 m	25-4932-150	N35	0,75 kW	1,9 A



# Single flexible extractor with exhaust funnel

**NORFI**



with NR-CP hose

with S hose

with FC-3 hose



3 x 400 V  
50 Hz



+150°C  
with S hose



+180°C  
with NR-CP hose



+300°C  
with MOTEX-300 hose

GVWR up to 3,5 t

Catalogue number	Exhaust hose			Nozzle type	Fan		
	Type	Diameter	Length		Type	Power	Current
S11268-001	NR-CP	150 mm	5,0 m	28-4520-150	N34	0,37 kW	1,0 A
06-4994-094	S	150 mm	5,0 m	28-4520-150	N35	0,75 kW	1,9 A

Emission extractor kit for cars high-temp. - GVWR up to and above 3,5 t

06-4994-092	MOTEX-300	150 mm	5,0 m	28-4520-150	N35	0,75 kW	1,9 A
06-4994-106	MOTEX-300	200 mm	5,0 m	28-4520-200	N92	2,2 kW	5,4 A



# Single flexible extractor with exhaust funnel for motorcycles

**NORFI**



3 x 400 V  
50 Hz



+180°C  
with NR-CP hose



28-4110-125



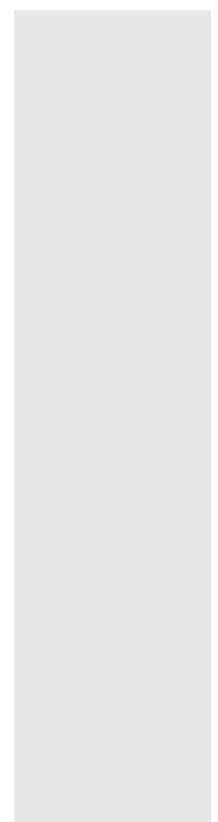
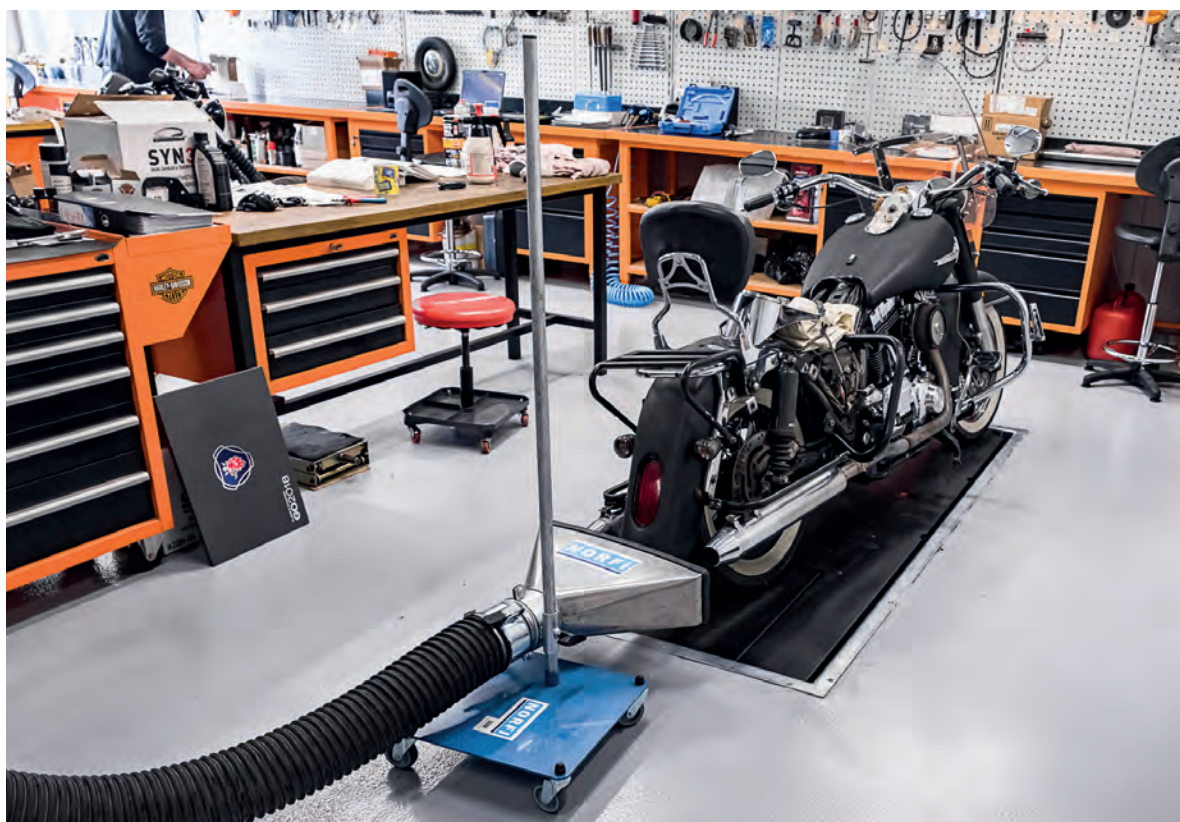
28-4520-125



28-4524-126

GVWR up to 3,5 t

Catalogue number	Exhaust hose			Nozzle type	Fan		
	Type	Diameter	Length		Type	Power	Current
P6-4996-110	NR-CP	125 mm	5,0 m	28-4110-125	N34	0,37 kW	1,0 A
P6-4996-111	NR-CP	125 mm	5,0 m	28-4520-125	N34	0,37 kW	1,0 A
P6-4996-112	NR-CP	125 mm	5,0 m	28-4524-126	N34	0,37 kW	1,0 A

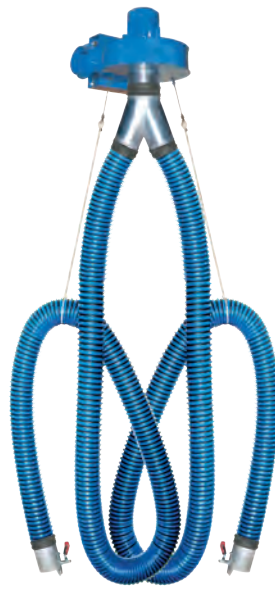


# Double flexible extractor P6 / S6 series with hose suspension

**NORFI**



P6 series



S6 series



3 x 400 V  
50 Hz



+150°C  
with S hose



+180°C  
with NR-CP hose

GVWR up to 3,5 t

Catalogue number	Exhaust hose			Nozzle type	Fan		
	Type	Diameter	Length		Type	Power	Current
S6-4996-076	S	75 mm	2 x 5,0 m	2 x 25-4932-075	N35	0,75 kW	1,9 A
P6-4996-102	NR-CP	100 mm	2 x 5,0 m	2 x 25-4932-100	N35	0,75 kW	1,9 A
S6-4996-103	S	100 mm	2 x 5,0 m	2 x 25-4932-100	N35	0,75 kW	1,9 A
P6-4996-104	NR-CP	100 mm	2 x 7,5 m	2 x 25-4932-100	N35	0,75 kW	1,9 A
P6-4996-105	NR-CP	100 mm	2 x 5,0 m	2 x 25-4937-110	N35	0,75 kW	1,9 A
P6-4996-106	NR-CP	100 mm	2 x 7,5 m	2 x 25-4936-100	N35	0,75 kW	1,9 A



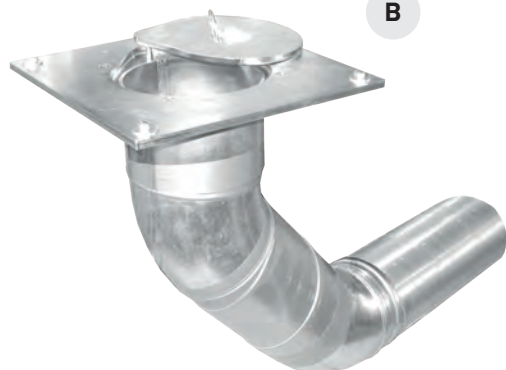
# Underfloor extraction system with hose connected to the floor plate



+180°C  
with NR-CP hose



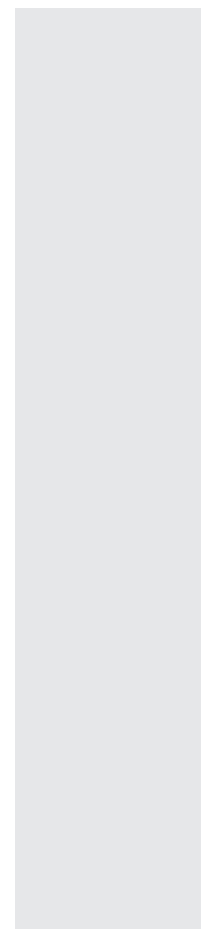
A



B

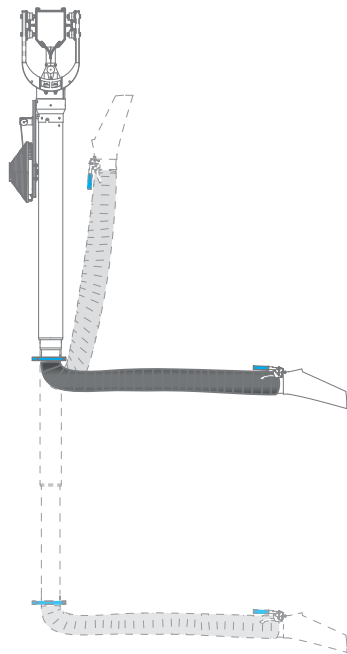
Also available: In-ground out of floor extraction system

Catalogue number „A”	Exhaust hose NR-CP		Exhaust nozzle		+	Catalogue number „B”	Floor plate
	Diameter	Length	Diameter	Inlet			Diameter
NP08-4936-100	100 mm	3,0 m	100 mm	155 x 85 mm		08-4078-100	100 mm
NP08-4934-150	150 mm	3,0 m	150 mm	DN 170 mm		08-4078-150	150 mm



# Touchless for rail systems ALU 150 and TECHNORAIL

**NORFI**



**+200°C**  
with standard hose

GVWR up to 3,5 t

Catalogue number	Rail type	Diameter connection	Air flow	Material		Weight
				Telescope	Nozzle	
30-4042-150	ALU 150	150 mm	350 - 450 m³/h	Aluminium	Rubber	37,5 kg
33-4042-150	TECHNORAIL	150 mm	350 - 450 m³/h	Aluminium	Rubber	33,5 kg
30-4042-150	All	150 mm	350 - 450 m³/h	Aluminium	Rubber	28,0 kg



# Extraction arm PAREX series for fumes / for exhaust gases

**NORFI**



for smoke and vapours



for exhaust gases



3 x 400 V  
50 Hz



+80°C  
with elastic hose



+180°C  
with NR-B hose

## Fume extractor PAREX-S for extraction of smoke and vapours

Catalogue number	Exhaust hose		Length		Fan		
	Type	Diameter	Arm	Hose	Type	Power	Current
S11068-003	elastic	160 mm	3,0 m	4,0 m	N34	0,37 kW	1,0 A

## Extraction arm PAREX-E for exhaust gas

S18017-001	NR-B	150 mm	3,0 m	4,0 m	N34	0,37 kW	1,0 A
------------	------	--------	-------	-------	-----	---------	-------





A

**MATERIAL: POLYESTER**



B

**MATERIAL: RUBBER  
BUILD: VULCANIZED**



C

**MATERIAL: FABRIC  
BUILD: CLIP**



D

**MATERIAL: FABRIC  
BUILD: SEWN**



up to +180°C

Hose type	Operating temperature	Build	Catalogue number				
			75 mm	100 mm	125 mm	150 mm	200 mm
S	up to +150°C	A	20-968-075	20-968-100	20-968-125	20-968-150	20-968-200
NR-B	up to +180°C	B	20-967-076	20-967-101	20-967-126	20-967-151	-
NR-CP	up to +180°C	B	20-967-075	20-967-100	20-967-125	20-967-150	-



up to +300°C

Hose type	Operating temperature	Build	Catalogue number				
			80 mm	100 mm	125 mm	150 mm	200 mm
MOTEX-200	up to +200°C	C	20-MX2-080	20-MX2-100	20-MX2-125	20-MX2-150	20-MX2-200
SG-200	up to +200°C	D	-	20-808-100	20-808-125	20-808-150	20-808-200
MOTEX-300	up to +300°C	C	20-MX3-080	20-MX3-100	20-MX3-125	20-MX3-150	20-MX3-200
SG-300	up to +300°C	D	-	20-807-100	20-807-125	20-807-150	20-807-200



up to +700°C

Hose type	Operating temperature	Build	Catalogue number				
			75 mm	100 mm	125 mm	150 mm	200 mm
SG-500	up to +500°C	D	-	20-804-100	20-804-125	20-804-150	20-804-200
SG-600	up to +600°C	D	-	20-812-100	20-812-125	20-812-150	20-812-200
SG-700	up to +700°C	D	-	20-811-100	20-811-125	20-811-150	20-811-200



A

TYPE: OVAL  
MATERIAL: RUBBER



B

TYPE: OVAL  
MATERIAL: RUBBER



C

TYPE: ROUND  
MATERIAL: RUBBER



D

TYPE: ROUND  
MATERIAL: ALUMINIUM

up to +180°C

Nozzle type	Suction opening	Catalogue number			
		75 mm	100 mm	125 mm	150 mm
A	155 x 85 mm	25-4936-076	25-4936-100	25-4936-105	-
A	210 x 100 mm	-	25-4936-124	25-4936-125	25-4936-150
B	160 x 80 mm	25-4937-075	25-4937-100	25-4937-125	25-4937-150
B	200 x 100 mm	-	25-4937-110	25-4937-126	25-4937-151
C	DN 170 mm	-	25-4934-100	25-4934-125	25-4934-150

up to +300°C

Nozzle type	Suction opening	Catalogue number			
		75 mm	100 mm	125 mm	150 mm
D	71 mm	25-4932-075	-	-	-
D	95 mm	-	25-4932-100	-	-
D	119 mm	-	-	25-4932-125	-
D	144 mm	-	-	-	25-4932-150

# Mobile twin funnel / Y-Adapter for twin exhaust systems

**NORFI**

Hose diameter: DN 125 mm, hose length 2 x 1 m

Catalogue number	Hose/nozzle connection	Nozzle's inlet dimensions
28-4973-032	155 x 85 mm	200 x 220 mm
28-4973-035	210 x 100 mm	200 x 220 mm
28-4973-061	DN 100 mm	200 x 220 mm
28-4973-079*	DN 100 mm	200 x 220 mm
28-4973-072	DN 125 mm	200 x 220 mm
28-4973-073*	DN 125 mm	200 x 220 mm
28-4973-075	DN 150 mm	200 x 220 mm
28-4973-081*	DN 150 mm	200 x 220 mm

\* version adapted to the quick coupler



**+180°C**  
with NR-B hose

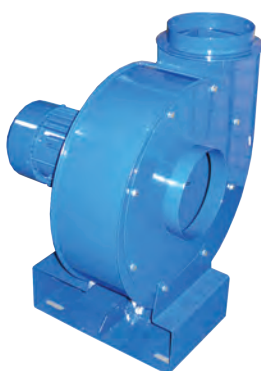
Hose diameter: DN 100 mm, hose length 2 x 1 m

Catalogue number	Hose/nozzle connection	Nozzle's inlet dimensions
28-4974-000	150 x 80 mm	155 x 85 mm
28-4974-008	200 x 100 mm	155 x 85 mm
28-4974-006	150 x 80 mm	205 x 110 mm
28-4974-001	200 x 100 mm	205 x 110 mm
28-4974-002	DN 100 mm	155 x 85 mm
28-4974-007	DN 100 mm	205 x 110 mm



**+180°C**  
with NR-B hose

## Centrifugal fans type N



**3 x 400 V**  
**50 Hz**

N series of centrifugal fans with adjustable mounting foot position (versions without mounting foot are also available).  
The fans of the N34, N35, N36 types are also available with connection to the exhaust hose reel.

Catalogue number	Air flow	Compression	Fan speed	Power	Current	Noise level
59-816-034	180 - 1200 m³/h	1100 - 500 Pa	2800 obr./min	0,37 kW	1,00 A	<81 dB (A)
59-816-035	180 - 1500 m³/h	1700 - 500 Pa	2790 obr./min	0,75 kW	1,90 A	<79 dB (A)
59-816-036	180 - 1800 m³/h	2100 - 800 Pa	2790 obr./min	1,10 kW	2,50 A	<78 dB (A)
59-816-092	180 - 2400 m³/h	2420 - 1000 Pa	2800 obr./min	2,20 kW	5,40 A	<93 dB (A)

**NORFI Polska sp. z o.o.**

ul. Partyzantów 11  
41-200 Sosnowiec  
Poland

phone: +48 32 263 33 88

e-mail: [info@norfi.pl](mailto:info@norfi.pl)

internet: [norfi.pl](http://norfi.pl)